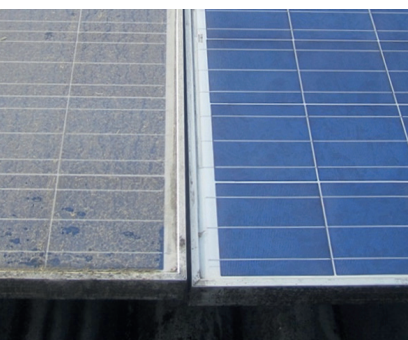
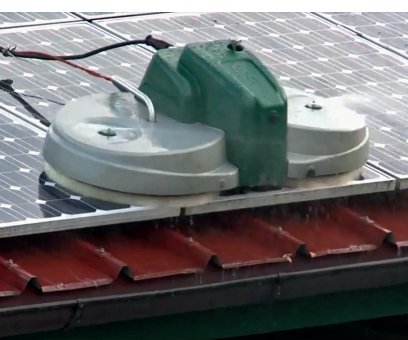




Module cleaning device PvSpin

The practical and easy-to-handle module cleaning device



Before - After

The new cleaning device PvSpin allows a swift and economic cleaning of big surface solar plants that are covered with dirt. Especially solar plants on agricultural buildings with ridge ventilation become dirty already after a short time in operation. This results in yield losses of 15% and more. Cleaning systems that are operated manually are often uneconomic. However, cleaning robots are expensive and difficult to transport. PvSpin is clean, quick and efficient, and easy to handle - so the PvSpin cleaning device will have paid itself off after a short time.

OPERATION AND HANDLING

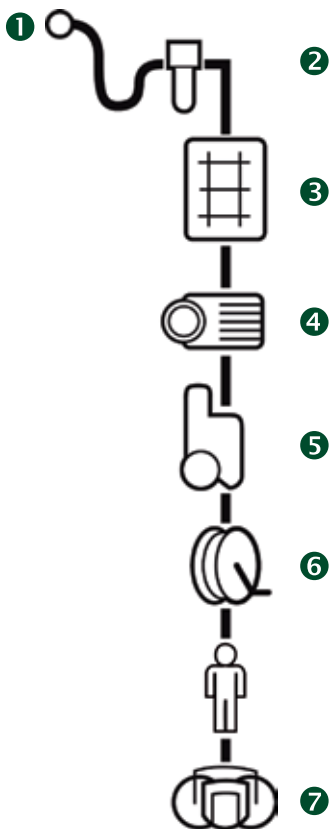
- High cleaning performance*
- Cleaning by two cleaning brushes that turn in opposing directions
- Robust and powerful water hydraulic axial piston rotating motor
- Material-protecting cleaning, as the soiling is soaked before being removed
- The device can be operated from the ridge by one operator
- It may be recommendable to employ a second operator (securing in the roof edge areas, additional guidance in case of very flat roofs or big rafter lengths).

Demovideo: <https://www.youtube.com/watch?v=-sZUTJ11faQ>

* In a test operation, a cleaning performance of a module surface area of crystalline modules equivalent to 20kW/h could be achieved.

Item number
182019-001 (PvSpin without accessories)
Length
1100 mm
Width
520 mm
Weight
approx. 25 kg
Brush diameter
520 mm
Operating pressure
min. 130 bar max. 160 bar
Operating flow rate
min. 10 l/min. max. 25 l/min.

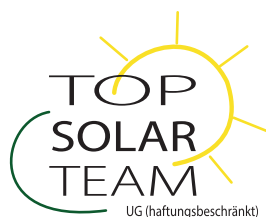
Subject to technical modifications.



WE ADVISE OUR CUSTOMERS TO SET UP THE SYSTEM IN THE FOLLOWING MANNER

- ❶ Water inflow and connection of the components: Standard hose with a nominal width of $\frac{1}{2}$ ", longer hoses with a nominal width of $\frac{3}{4}$ ".
Adapter kits for standard water taps:
Recommended if the device is used at different locations.
- ❷ Water filtering system: Flow rate capacity of 2 m³/h for the preparation of water that is suitable for cleaning.
- ❸ Buffer tank: To avoid dry running in the high pressure pump of the high pressure cleaning device. If there is no sufficient water pressure or flow rate on site, we recommend the utilization of a standard pallet tank with a capacity of 1000 l. In order to safeguard an uninterrupted cleaning operation, the tank can be filled with a sufficient quantity of water during a preparation phase. Please make sure that rain-water is sufficiently pre-filtered.
- ❹ Pump: Between the tank and the high-pressure cleaner with a minimum flow rate of 2000 l/h. If a self-priming high pressure cleaner is used, no pump is required ❹.
- ❺ High pressure cleaner, possibly heatable. Pay regard to the safety information of the high-pressure cleaner!
- ❻ Hose reel with crank including rotary water feed-through.
- ❼ Inlet pipe to the cleaning device: DN8 high pressure hose, possibly with hose extension. Connector M 22x1.5.

A product of TopSolarTeam UG (haftungsbeschränkt)



SERVICE AND RENTAL EQUIPMENT

Andreas Diemer Top Solar Team
 Eichenstraße 6, D-83104 Tuntenhausen-Schönau
 Phone: + 49 (0) 8065 - 718 | Fax: + 49 (0) 8065 - 719
 Mobile: + 49 (0) 157 - 71359713