

## Manual for firmware update

# P-CHARGE STAND-ALONE

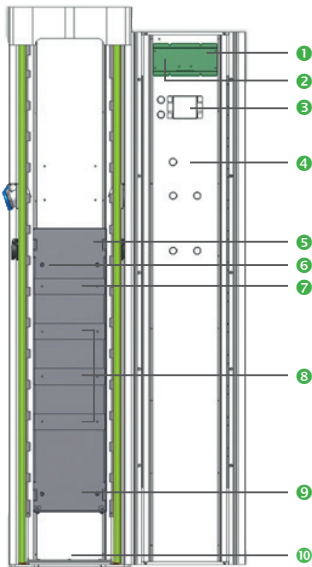


Figure 1: Front View Stand-Alone

- 1 Automatic machine control (microcontroller)
- 2 Key "E" (also sometimes marked with "S" in the display)
- 3 RFID card reader (alternatively coin validator, not available in the case of the push-button version)
- 4 Button 7
- 5 I/O board
- 6 power supply
- 7 ABL EVCC Box
- 8 Installation contactor, energy meter, FI/LS combination
- 9 Main line branch terminal
- 10 Cable entry mains connection in electrical box

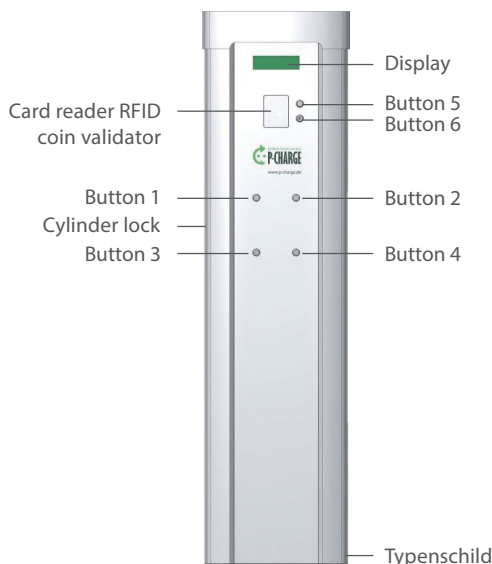


Figure 2: Exterior view stand-alone

## The right way to handle the charging station

### OVERVIEW AND CONSTRUCTION OF THE LOADING COLUMN

In Figure 1, the P-CHARGE stand-alone in front view is in opened with explanation of the individual components. For opening the charging station, put the key in the cylinder lock on the left side (Figure 2). After unlocking the charging station the lid/cap of the charging station can be pushed up and the door can be opened.

The charging points (in view of the observer, which is standing in front of the pillar facing the front view, are arranged as follows (operating button on the door correspond):

Charging point1	Charging point 2
Charging point3	Charging point4

### THE CONTROLUNITS

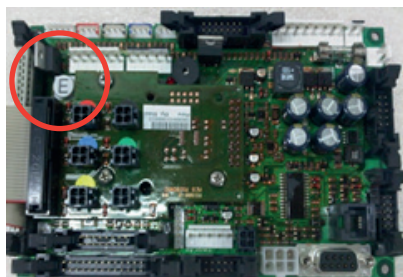
Some keys are multi-used. The respective functions are in Table 1:

Taste	Standardfunktion	PIN-Eingabe	Menü
Button 1	socket top left	PIN digit 1	cursor down
Button 2	socket top right	PIN digit 2	Cursor up
Button 3	socket bottom left	PIN digit 3	open menu item
Button 4	socket bottom right	PIN digit 4	close menu item
Button 5	Language selection: Switch between German (DE) and English (EN)	PIN digit 3	open menu item
Button 6	C = Cancel button: the charging station returns to the starting situation	PIN digit 4	Close menu item
Button 7	Reset the cash content store		
"E" button, sometimes also called "S" key in display menu	menu	PIN confirmation	menu abort

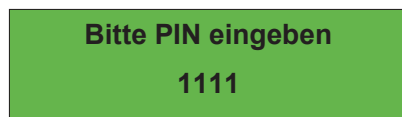
Table 1: Function of the operating elements

# Manual for firmware update

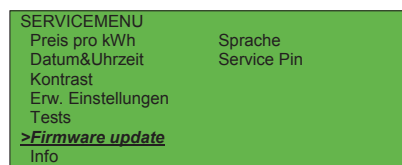
## P-CHARGE STAND-ALONE



Step 2



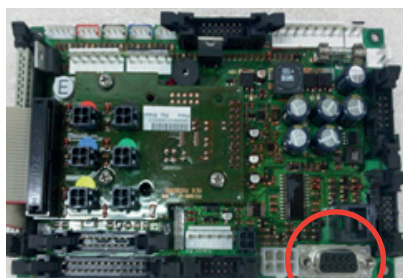
Step 3



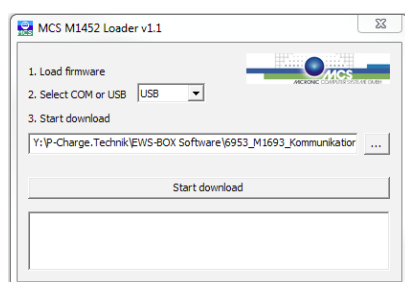
Step 4



Step 5



Step 6



Step 8

## Softwareupdates

### UPDATE CONTROL BOARD

1. Open the P-CHARGE stand-alone. Unless the Stand-alone is not in an operational state, please make sure you get an appropriate connection of the charging station.
  2. To enter the customer menu, press the key 'E' on the back of the display mounted board, until the beep sounds.
  3. Now use the buttons 1 to 4 (see illustration 2) the enter the service PIN. In the delivery state it's "1111".
  4. Change to the menu item "Firmware update" in the following menu view by pressing button 1 and confirm your selection by pressing button 3.
  5. The link to the update is now shown in the display. This is done by the message "update..." in the display.
  6. Connect the P-CHARGE Stand-Alone to a PC/ Laptop for updating the firmware.
  7. Now open the update program "m1452loader" on your PC/ laptop. This program will be made available to you free of charge if required.
  8. Now set the type of connection. The COM connection or the USB connection are available for this purpose. In the next step, select the update file via
- After completion of these points, the selection must still be confirmed with "Start download".
9. The firmware update is / will now be transferred. A successful transmission is confirmed by a series of beeps.
  10. After that the charging station restarts. To complete the update, plug in the connector from point 6 back into the intended slot. Finally, turn the control fuse F0 off and on again. The charging station now restarts with the updated software.